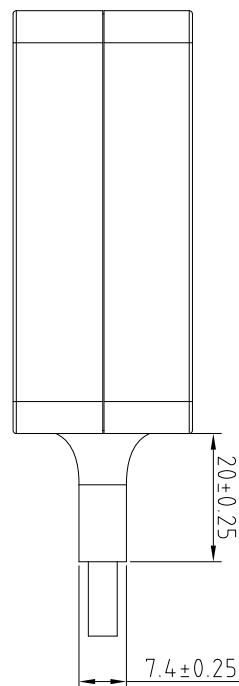


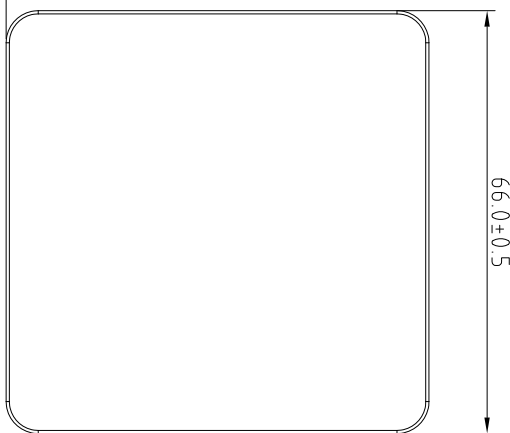
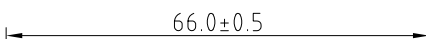
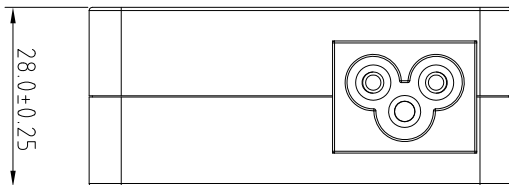
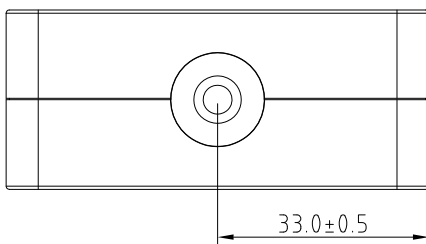
外觀圖



REV	DESCRIPTION	DATE



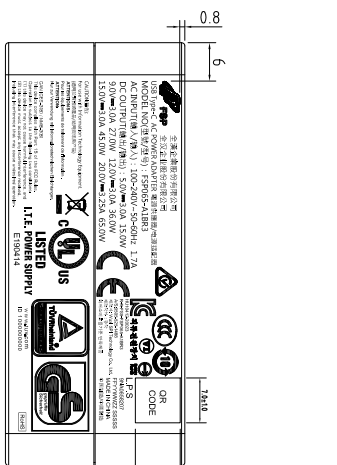
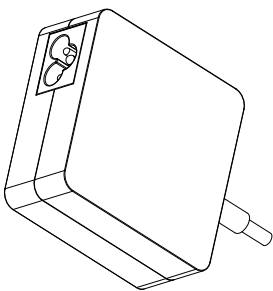
ITEM	PART NAME	COLOR
1	TOP	BLACK
2	BOTTOM	BLACK
3	C6 SOCKET	BLACK
4	POWER CORD	BLACK



66.0±0.5

1000±50

6.65±0.2



50±30

110±30

CABLE TIE STEEL WIRE
PVC PLATED



DIMENSIONAL TOLERANCES		
(V)	±0.2	()
>90~100	±0.3	DECIMALS
>100~200	±0.4	X ±0.8
>200~300	±0.5	XX ±0.8
ABOVE 300	±0.8	XXX ±0.5

HOLES ±0.05		
UP~50	±0.15	()
50~100	±0.2	UP~600 ±1.5
100~200	±0.25	600~800 ±2.4
200~250	±0.35	900~OVER ±3.1

ANGLES ±0.5°		
UP~50	±0.15	()
50~100	±0.2	UP~600 ±1.5
100~200	±0.25	600~800 ±2.4
200~250	±0.35	900~OVER ±3.1

Functional Ground PVC Type	Functional Ground PVC Type	Functional Ground PVC Type
FR	FR	FR
FR	FR	FR
FR	FR	FR

MODEL NO:	TITLE:	DATE
FSP065-ATBR3 (F660002)	Physical Dimension	2020-9-4

SHEET:	REV:
1 OF 1	01

P/N: 9NA0658207

SCALE:
UNIT: mm

Functional Ground PVC Type	Functional Ground PVC Type	Functional Ground PVC Type
FR	FR	FR
FR	FR	FR
FR	FR	FR

MODEL NO:	TITLE:	DATE
FSP065-ATBR3 (F660002)	Physical Dimension	2020-9-4

SHEET:	REV:
1 OF 1	01

MODEL NO:	TITLE:	DATE
FSP065-ATBR3 (F660002)	Physical Dimension	2020-9-4

SHEET:	REV:
1 OF 1	01

P/N: 9NA0658207

Mechanical Drawing (外觀/結構圖)